

BuckleyBrown
ESTATE AGENTS

£110,000

Victoria Street, Mansfield,



Welcome to **BuckleyBrown**, where every home is carefully presented, so you can explore with clarity and confidence.

BuckleyBrown
ESTATE AGENTS

"The property offers a well-proportioned layout with excellent potential throughout, making it an ideal opportunity for purchasers seeking a renovation project or investors looking to add value."

- Tim, Valuer



SPACIOUS HOME GREAT POTENTIAL

Situated within a popular terrace, this two-bedroom home presents an excellent opportunity for investors or buyers looking to put their own stamp on a property.

The accommodation is well proportioned and thoughtfully arranged, offering comfortable living space with scope for some updating and modernisation. Offered with plenty of potential, this property is ideal for those seeking a home they can gradually improve and make their own.



THE FINER DETAILS

The property briefly comprises a spacious and well-presented living room, offering a comfortable setting for everyday living, along with a fully equipped kitchen to the rear. The kitchen provides ample storage and workspace, and benefits from direct access to the rear courtyard, creating a practical flow between indoor and outdoor space.

To the first floor, there are two well-proportioned bedrooms, both offering good natural light and flexibility for use as sleeping accommodation, a guest room, or home office if required. The accommodation is completed by a Jack and Jill bathroom, conveniently serving both bedrooms and providing a functional and well-arranged layout.

Externally, the property enjoys an enclosed rear courtyard, offering a private and low-maintenance outdoor area, ideal for seating or storage, and enhancing the overall appeal of the home.





BuckleyBrown
ESTATE AGENTS







LIFE IN MANSFIELD

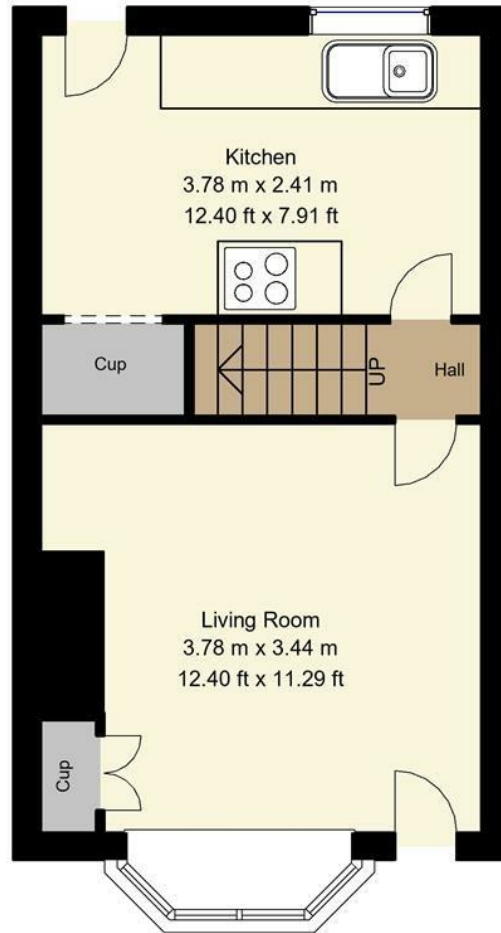
Mansfield is a well-established and vibrant market town set in the heart of Nottinghamshire, offering a blend of rich heritage, modern amenities and excellent connectivity.

Residents enjoy access to a wide variety of shops, supermarkets, restaurants and leisure facilities, including the popular Four Seasons Shopping Centre and a range of parks and recreational spaces. This mix of amenities makes Mansfield particularly attractive to families, professionals and retirees alike.

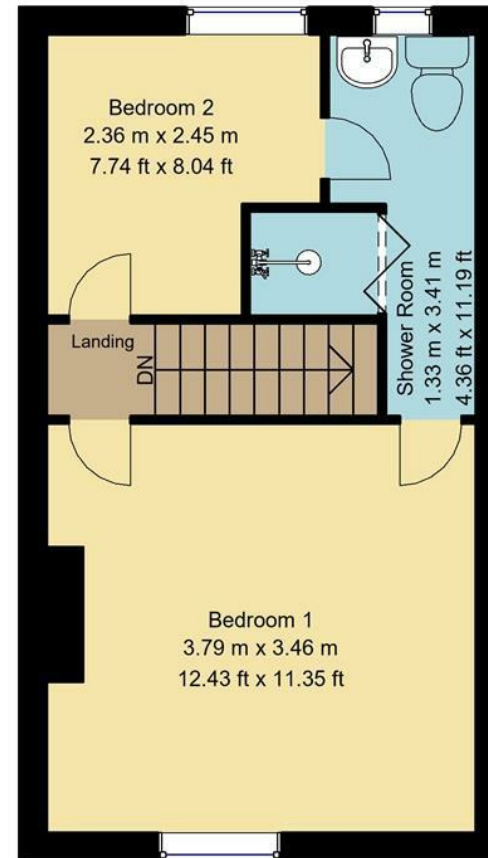
Surrounded by attractive countryside and close to the edge of Sherwood Forest, Mansfield is well suited to outdoor enthusiasts. The area offers numerous walking and cycling routes, with nearby woodland, country parks and green spaces providing opportunities for recreation and relaxation. Local parks and nature areas further enhance the town's appeal for those who enjoy an active, outdoor lifestyle.



Ground Floor
28sq.m/296.22sq.ft
Approx



First Floor
28sq.m/296.22sq.ft
Approx



Whilst every attempt has been made to ensure the accuracy of the floor plan contained here, no responsibility is taken for incorrect measurements of doors, windows, appliances and room or any error, omission or misstatement. Exterior and interior walls are drawn to scale based on interior measurements. Any figure given is for initial guidance only and should not be relied on as basis of valuation. These plans are for marketing purposes only and should be used as such by any prospective purchase. Specially no guarantee is should not be relied on as a basis of valuation. These plans are for marketing purposes only and should be used as such by any prospective purchase. Specifically no guarantee is given on the total square footage of the property if quoted on this plan.
CC Ltd ©2018

Key Features

Spacious layout throughout

Fully equipped kitchen with rear access

Two well proportioned bedrooms

Jack and Jill bathroom

Enclosed rear courtyard

Excellent potential to add your own stamp

EPC Rating - C

Approx Sq Ft- 592.44

BuckleyBrown
ESTATE AGENTS



These particulars are intended as a guide only and do not form part of any offer or contract. All descriptions, measurements, images and plans are provided for illustration purposes and should not be relied upon as statements of fact. Prospective purchasers should satisfy themselves as to the accuracy of the information. Buckley Brown Estate Agents accept no liability for any loss arising from reliance on these details.

© Buckley Brown Estate Agents 2026. All rights reserved.

Exceptional homes deserve
exceptional representation.

Let's Chat.

01623 633633

mansfield@buckleybrown.co.uk

[buckleybrown.co.uk](https://www.buckleybrown.co.uk)

BuckleyBrown
ESTATE AGENTS